

Make the

SMART MOVE!



**EXCELLENCE &
AFFORDABILITY**

The top 4 reasons Jewish families are moving to New Jersey

- 1 AFFORDABLE, AWARD-WINNING JEWISH DAY SCHOOLS**
Benefit from the Greater MetroWest Day School Initiative, a bold multi-million dollar investment in affordability and academic excellence. These superior schools are now affordable for virtually every family in our community.
Plus there is an additional \$1800 tuition savings when you move to New Jersey and enroll your child in one of our four schools.
- 2 EASY COMMUTE TO NEW YORK** by car, bus and rail.
Also convenient to universities, hospitals and major job hubs.
- 3 THRIVING JEWISH COMMUNITIES** offering Kosher options, diversity, a wide range of synagogue choices and a dynamic cultural environment.
- 4 AFFORDABLE HOMES** at a fraction of New York City prices mean a wonderful quality of life – especially for kids.

How much will it really cost me?

**Check tuition cost for your family
using our Tuition MAX estimator at
www.njdayschools.org/tuition_estimator**

GOLDA OCH ACADEMY
West Orange, NJ

A Solomon Schechter
Jewish Day School
Pre-K – 12th Grade

GOTTESMAN RTW ACADEMY
Randolph, NJ

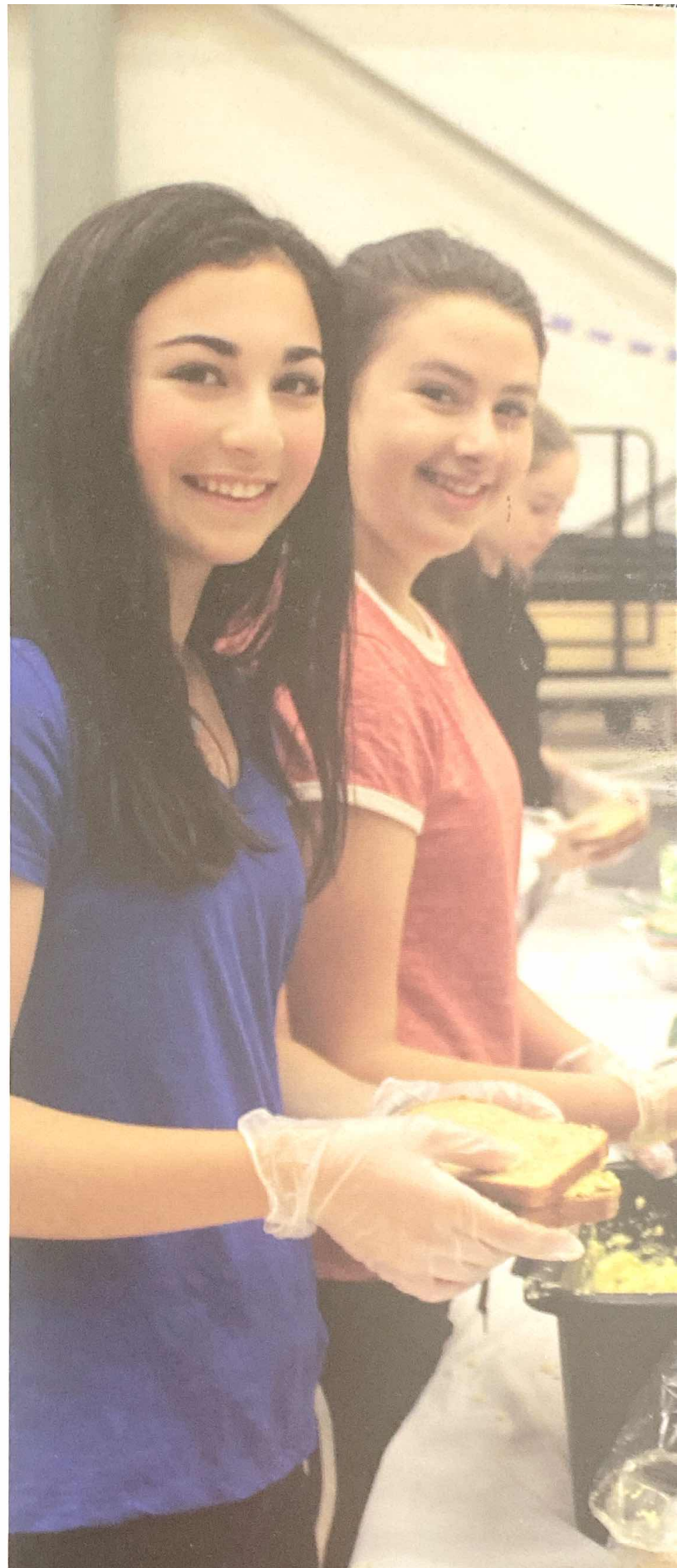
A Co-educational, Pluralistic
Jewish Day School
Infant – 8th Grade

JEWISH EDUCATIONAL CENTER
Elizabeth, NJ

A Modern Torah
Jewish Day School
Nursery 3 – 12th Grade

**JOSEPH KUSHNER
HEBREW ACADEMY
RAE KUSHNER
YESHIVA HIGH SCHOOL**
Livingston, NJ

A Modern Orthodox
Jewish Day School
Nursery 3 – 12th Grade



Closer to New York than a lot of New York.



Ⓐ Gottesman RTW Academy
Randolph, NJ

Ⓑ Golda Och Academy
West Orange, NJ

Ⓒ Jewish Education Center
Elizabeth, NJ

Ⓓ Joseph Kushner Hebrew Academy
Rae Kushner Yeshiva High School
Livingston, NJ



Jewish Federation®
OF GREATER METROWEST NJ

901 Route 10, P.O. Box 929
Whippany, NJ 07981

njdayschools.org

Call Rebecca at 973-929-2962 or email info@njdayschools.org